



services offered by the Academic support center

Weekly individual tutoring sessions improve

- Organizational skills
- Learning techniques
- Note-taking skills
- Test-taking abilities
- Reading comprehension

Academic advisers guide students

- To the appropriate courses
- In the right sequence
- For a balanced schedule

Based on the documented learning disability, accommodations might include

- Taping of class lectures
- Note taking assistance
- Extended time for completing tests
- Alternative test format

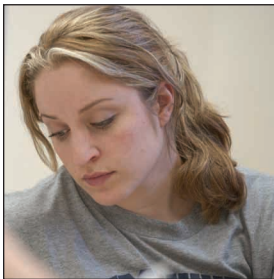
Additional learning support is available through

- Wilson Reading Method
- Irlen Method
- Kurzweil and Naturally Speaking
- Adaptive equipment and computers



The Academic support center

The Academic Support Center is designed to support students with documented learning disabilities such as attention deficit disorder (ADD), attention deficit hyperactivity disorder (ADHD), and dyslexia. Services offered by the Center are voluntary and comprehensive, created to develop independence and self-advocacy.



Admission to NOTRE DAME COLLEGE

Students wishing to enroll at Notre Dame College should make application through the Admissions Office. Applications are available on line at www.NotreDameCollege.edu/application/

Questions can be answered by calling the Admissions Office at 216.373.5355.

All students are expected to meet the academic standards set by the College.

Admission to the Academic support center

Students wishing to participate in the services offered by the Academic Support Center should send a:

- copy of your acceptance letter from the Admissions Office of Notre Dame College,
- psycho-educational evaluation conducted within the last three years,
- current Individual Education Plan (IEP) if available

To:

Gretchen Noetzel Walsh, M.S. Ed.
Director of the Academic Support Center
4545 College Road
Cleveland, Ohio 44121